

Better Equipment

Conducted by E. T. KEYSER



Egyptian in Both Architecture and Decoration Is Grauman's New House

THE \$200,000 Grauman Egyptian theatre which opened in Hollywood, California, on October 18 with Robin Hood constitutes an architectural innovation in picture theatre design in that it is as thoroughly Egyptian in arrangement and decoration as any modern structure could reasonably be.

One of the innovations introduced by Grauman in the building of the new theatre is an open air fore court, one hundred and fifty feet long by forty-five feet wide through which, after purchasing a ticket, one passes into the theatre lobby.

This lobby measures seventy-five feet in length by twenty-five feet in width and its ceiling is twenty-four feet above its Mosaic floor.

The lobby leads into a curved foyer from which one enters the aisles of the auditorium. This latter is one hundred and eighteen feet in length, one hundred and sixteen feet in width and contains seventeen hundred and sixty of the house's total seating capacity of two thousand.

Egyptian Decorations

Flanked by Egyptian columns, two on each side, the stage, which is equipped for any kind of a theatrical performance, measures seventy-three by thirty feet. Between the columns, which are six feet in diameter, is a statue of the Sphinx, and above the proscenium arch is secreted the organ chamber, which measures fifty-six by fifteen feet.

The walls are adorned with hieroglyphics and Egyptian sculptures in low relief. The harmony of carving and coloring has been extended even to the projection room.

Two Power's Projectors

Mechanics and art join hands to make a

perfect screen display of motion pictures and that is why Sid Grauman pays so much detailed attention to the projection rooms to his theatres. Grauman long ago realized that good pictures, if poorly projected, will not be a popular success and this understanding of the screen art is responsible for the minute care with which the projection rooms of Grauman's theatres are equipped.

The mechanical equipment of the projec-

to insure mechanical perfection in the screening of all pictures.

Remote Control System

This equipment is operated by the projectionist by means of automatic electrical controls arranged in three stations, from any one of which he will have complete control of the entire equipment.

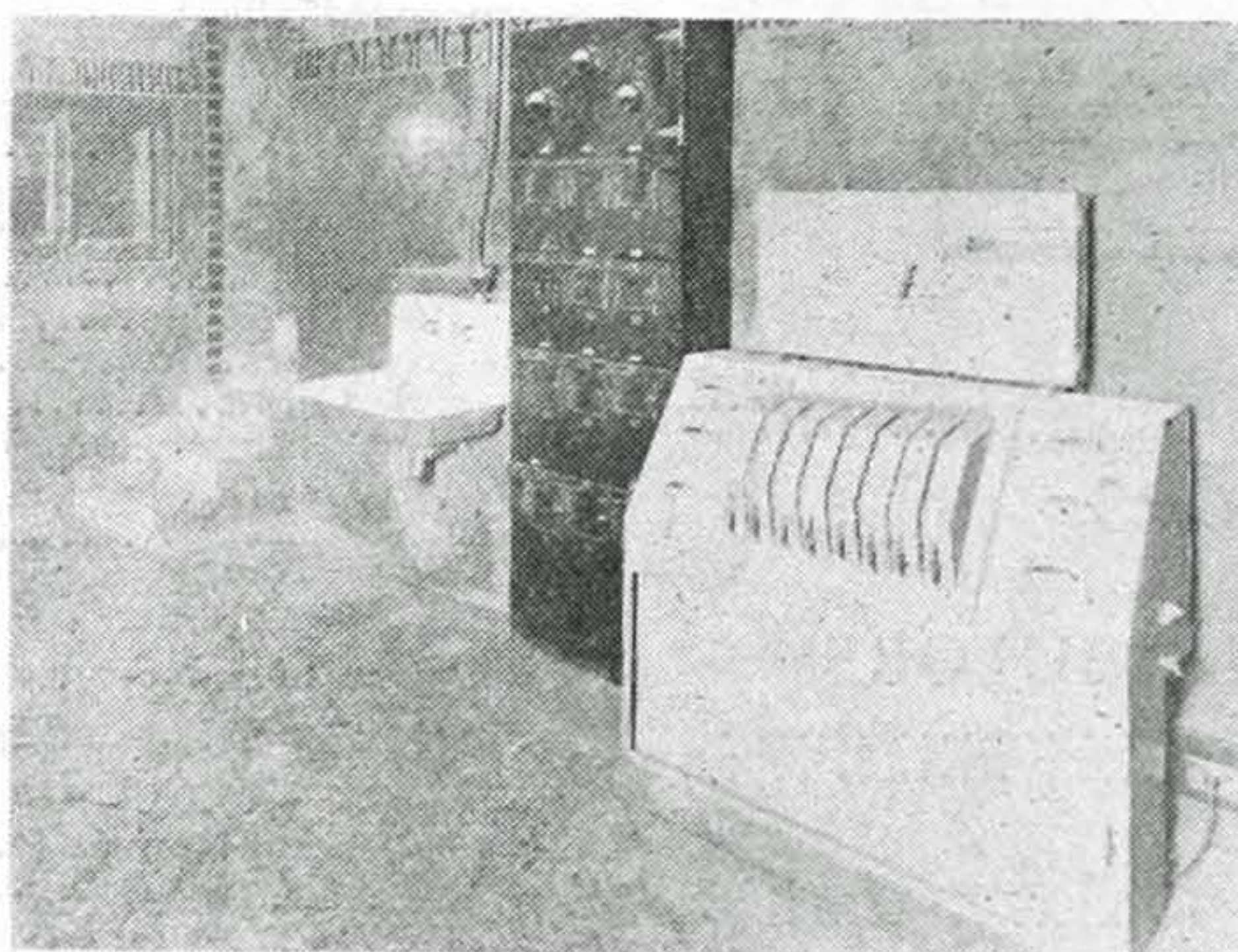
The comfort of the projection room has been further enhanced by placing the rheostats of the filming machines in a specially made cabinet. Like the main room, this is ventilated by a fresh air system that insures a constant circulation of ozone.

Because the rheostats generate an intense heat, the customary plan of installing them in the projection room was abandoned in the Egyptian and a separate compartment provided and in this also has been placed the Enterprise automatic re-wind on which the films will be coiled up after they have been run in the projection room.

Adjoining the main projection room, entry to which is obtained from the roof, a film vault has been built. Constructed on the order of a bank safe, with a steel door, this vault is absolutely fireproof, and will insure the safety of the highly inflammable celluloid films while they are not being run.

All attractions to be shown at the Egyptian will be stored in this vault both before and during their exhibition runs. Every known safety method of handling the film has been installed in this compartment and any untoward accident to them has been rendered practically impossible by the precautions taken.

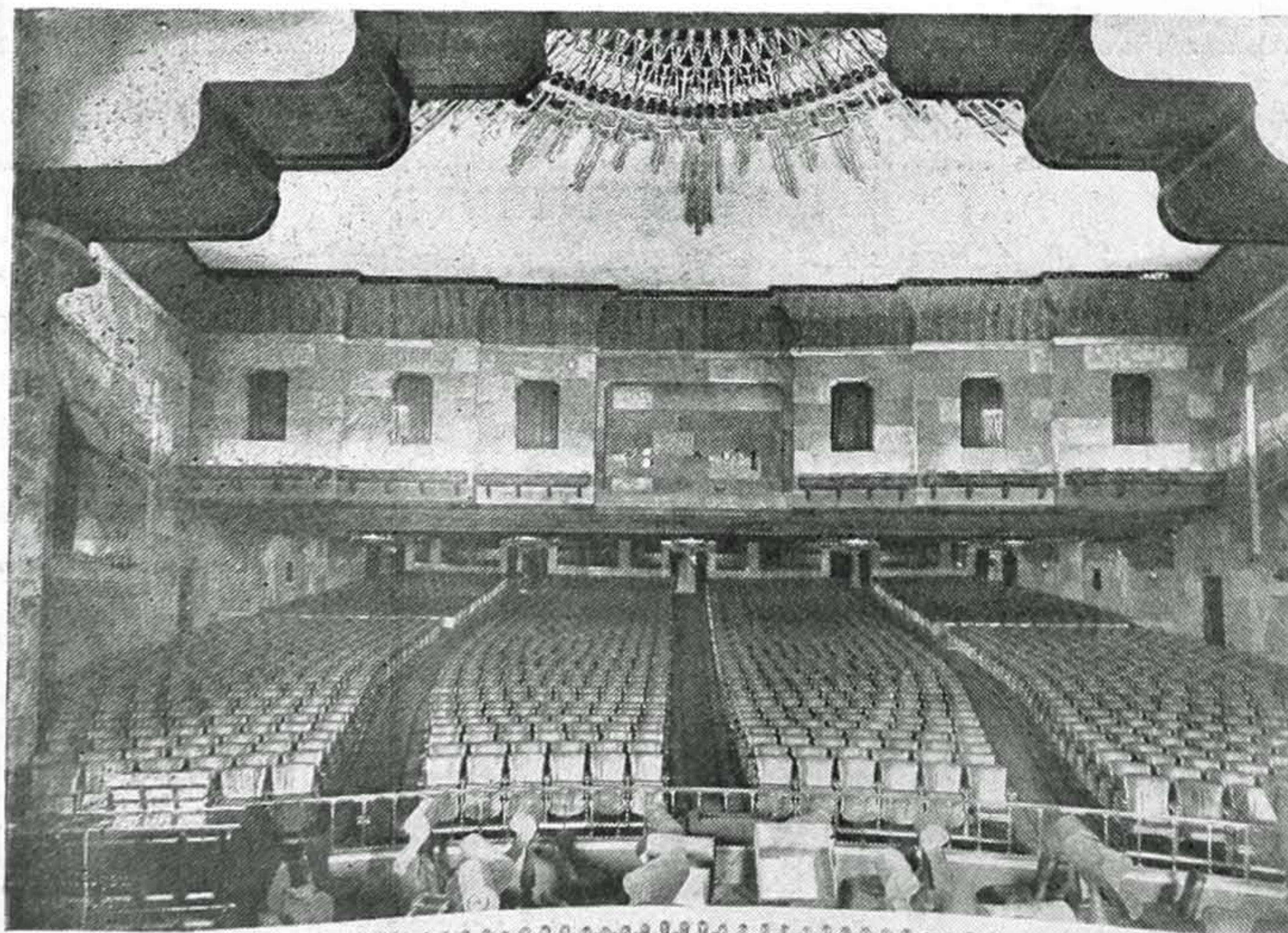
The theatre has been especially designed to resist the effects of any possible earth tremblers. The main carrying member of the roof is an arch with a span of one hundred and fourteen feet.



FILM VAULT

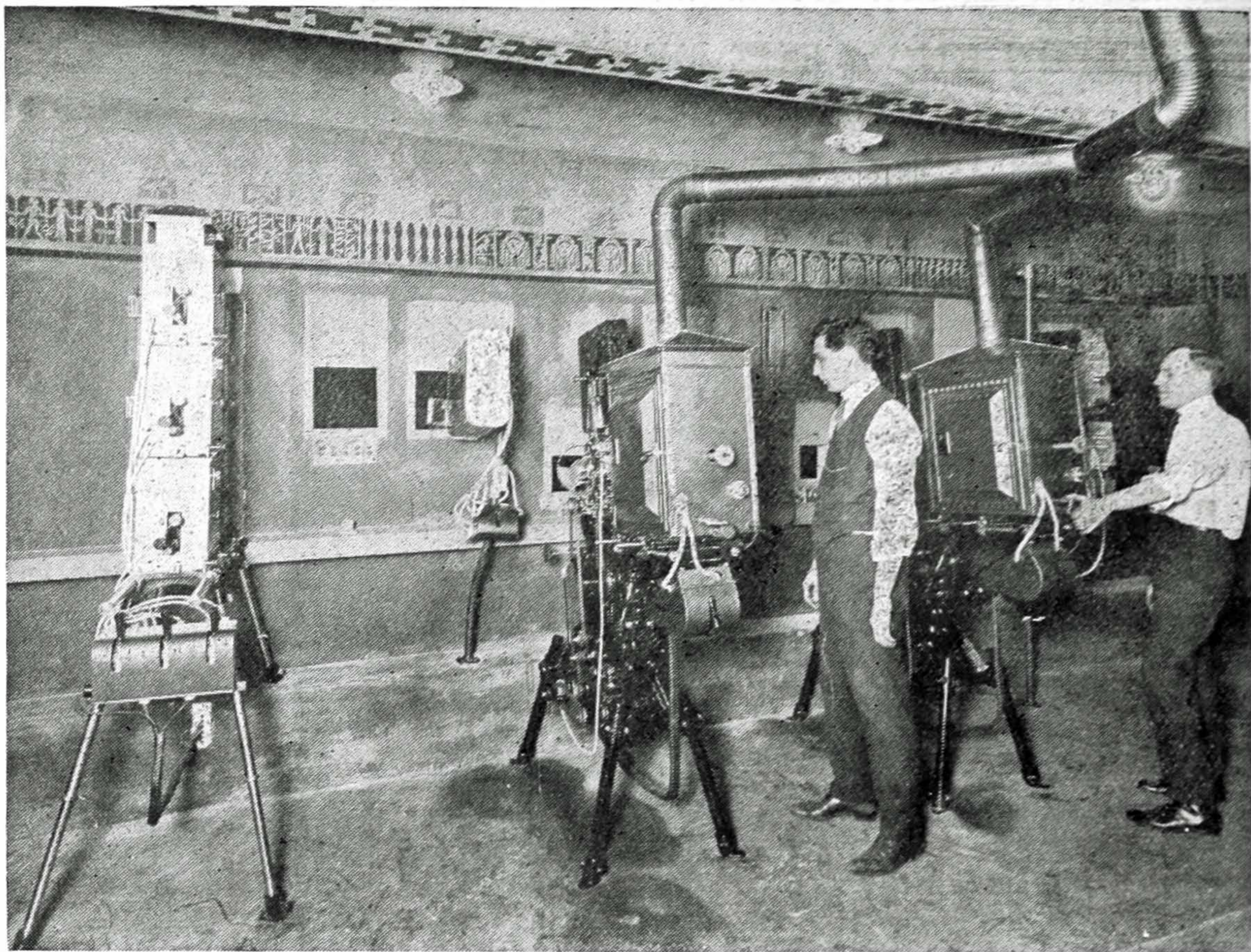
of Grauman's Egyptian Theatre, showing film cabinet.

tion room on which \$5,000 has been expended, includes two Power's six-B projectors, illuminated with Power's G. E. high intensity arcs; one Power's triple dissolver, with which some of the latest coloring effects will be presented; three spot lights casting vari-colored hues; a special Westinghouse generator, wound for a capacity of 125 amperes, and the necessary connections



VIEWS OF GRAUMAN'S EGYPTIAN THEATRE, HOLLYWOOD, CAL.

Showing interior of house, as seen from the stage and the novel open air lobby court which gives access to the lobby proper.



PROJECTION ROOM, GRAUMAN'S EGYPTIAN

Showing the decorated walls, the two Power's projectors, with vent flues, also the Power's Stereopticon.

The ventilating system is of the tempered, air washed type. The electric lighting is in three color effect and the system is con-

trolled from a dead faced switch-board on the stage, connected with a three-dimmer system.