

Grauman Projection Room Is Artistic and Well Ventilated

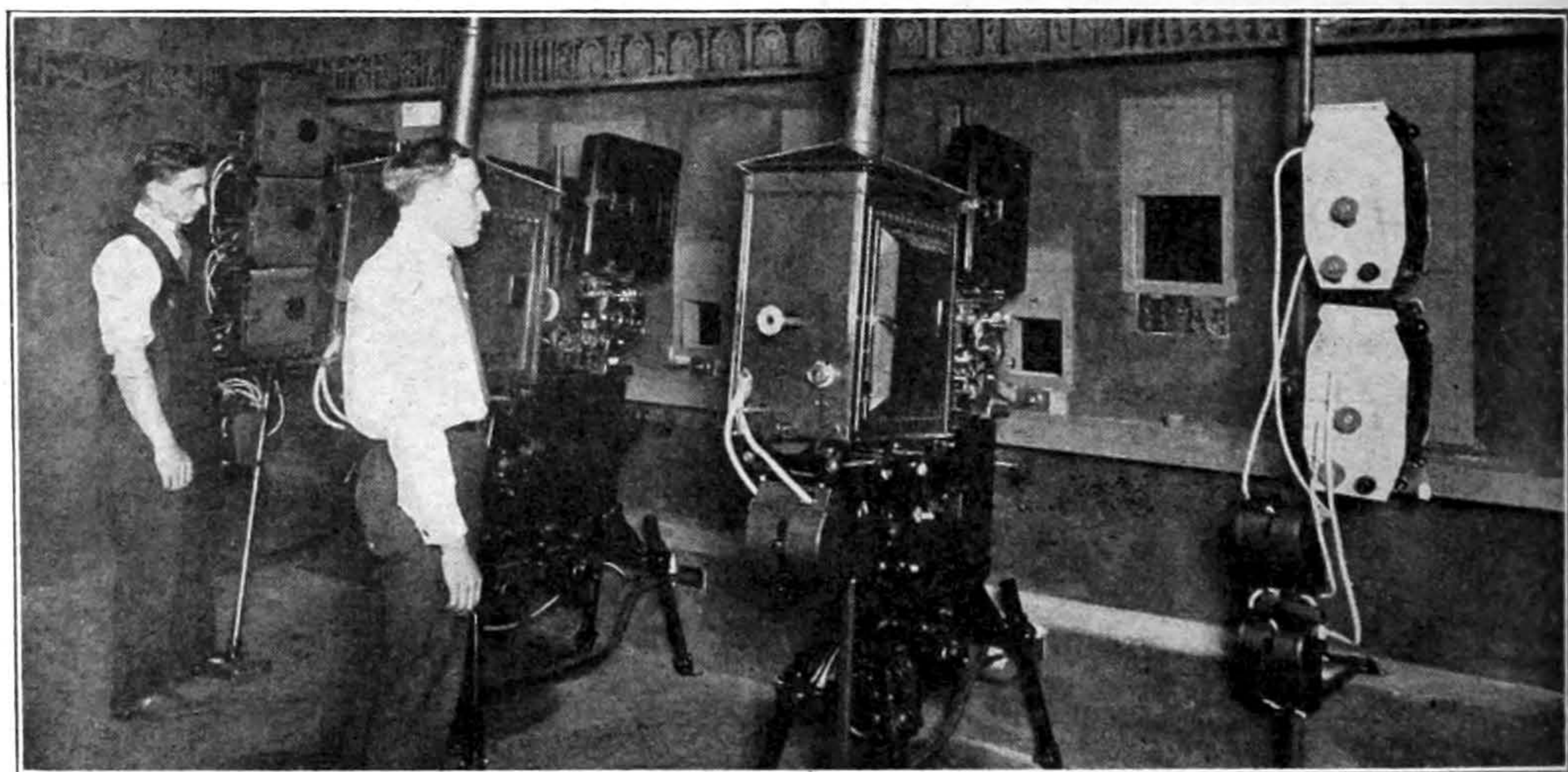
The day of the projection with its bare walls and general uninviting appearance apparently is on the wane. In the past, while a touch of beauty and the artistic have been applied to virtually every phase of the theatre the operators room has, in most cases, escaped consideration. With provision for comfort and conveniences established recent theatres have gone another step and brought "atmosphere" into the projectionists working quarters.

Decorations Inspire Work

This has been done at Sid Grauman's new Hollywood theatre where mechanics and art have joined hands to bring about

projectionist by means of automatic electrical controls arranged in three stations, from any one of which the operator will have complete control of the entire equipment.

The comfort of the projection room has been further enhanced by placing the rheostats of the filming machines in a specially made cabinet. Like the main booth, this is ventilated by a fresh air system that insures a constant circulation. Because the rheostats generate an intense heat, the customary plan of installing them in the projection room was abandoned in Grauman's theatre and a separate compartment provided and in this cabinet has been placed the Enterprise automatic re-wind on which the films will be coiled up after they have been run in the projection room.



Here is the modern projection in Sid Grauman's new Hollywood theatre. Note the decorations of the walls, carried out in harmony with the remainder of the house. Mr. Grauman believes that "atmosphere" in the room makes for a better picture on the screen. Powers projectors are used.

a perfect screen display. Carrying out the Egyptian motif of the theatre, the projection room has been finished in a three tone color scheme. The border of the side walls is studded with hieroglyphics, while the ceiling is toned to the night blue of the sky. With indirect lighting the booth presents not only an attractive interior but one also calculated to inspire the operator to artistic work.

Latest equipment has been installed in the booth at a cost of more than \$5,000. It includes two Powers' 6-B projectors, illuminated with Powers' high intensity arc lights, one Powers' triple dissolver, with which some of the latest coloring effects will be presented in Grauman's presentations; three spot lamps casting vari-colored hues, a special Westinghouse generator, wound for a capacity of 125 amperes, and the necessary connections to insure mechanical perfection in the screening of all pictures.

Room Well Ventilated

This equipment is operated by the

Adjoining the main booth, entry to which is obtained from the roof, thereby adding to the daylight freshness of the projection room, a film vault has been built. Constructed on the order of a bank safe, with a steel door, this vault is absolutely fireproof and will insure the safety of the films while they are not being run.

Vault Assures Safety

All attractions to be shown at Grauman's will be stored in this vault both before and during their exhibition runs. Every known safety method of handling the picture coils has been installed in this compartment and any untoward accident to the films has been rendered practically impossible by the precautions taken.

Shawnee, Okla.—The Garden theatre, a new and modern theatre, will be completed and ready for opening soon.

Troy, N. Y.—The new Troy theatre, costing about \$100,000, will be opened January 1, it is expected.