

# THE NEW FOX BAKERSFIELD

THE NEW Fox theatre in Bakersfield, Cal., is located two blocks off the main business intersection. Prominence was given the building by means of an advertising tower, which may be seen for blocks in all directions. The building covers an area of 122x175 feet, and besides the 1,700-seat theatre, houses several shops, which serve not only to bring additional patronage to this center but to lend interest to theatregoers. S. Charles Lee was the architect.

The building is of reinforced concrete and steel construction, with exterior stucco finish and tile roofing, two paramount characteristics of exterior Spanish architecture, embodied in this addition to the Fox chain. The site is a corner giving access to the theatre entrance from two streets, with the box office prominent in the outside corner. Bulletin frames blend into the Spanish theme, instead of presenting the oft-seen billboard appearance.

The foyer is characterized by a reserve not often seen in this type of house, there being little ornamentation, either in archi-

tectural treatment or in furnishings. Gorgeous painted tapestries at either end of the foyer are the centers of interest, the one picturing an early historical event of moment in California history, the other being a replica of an early California map.

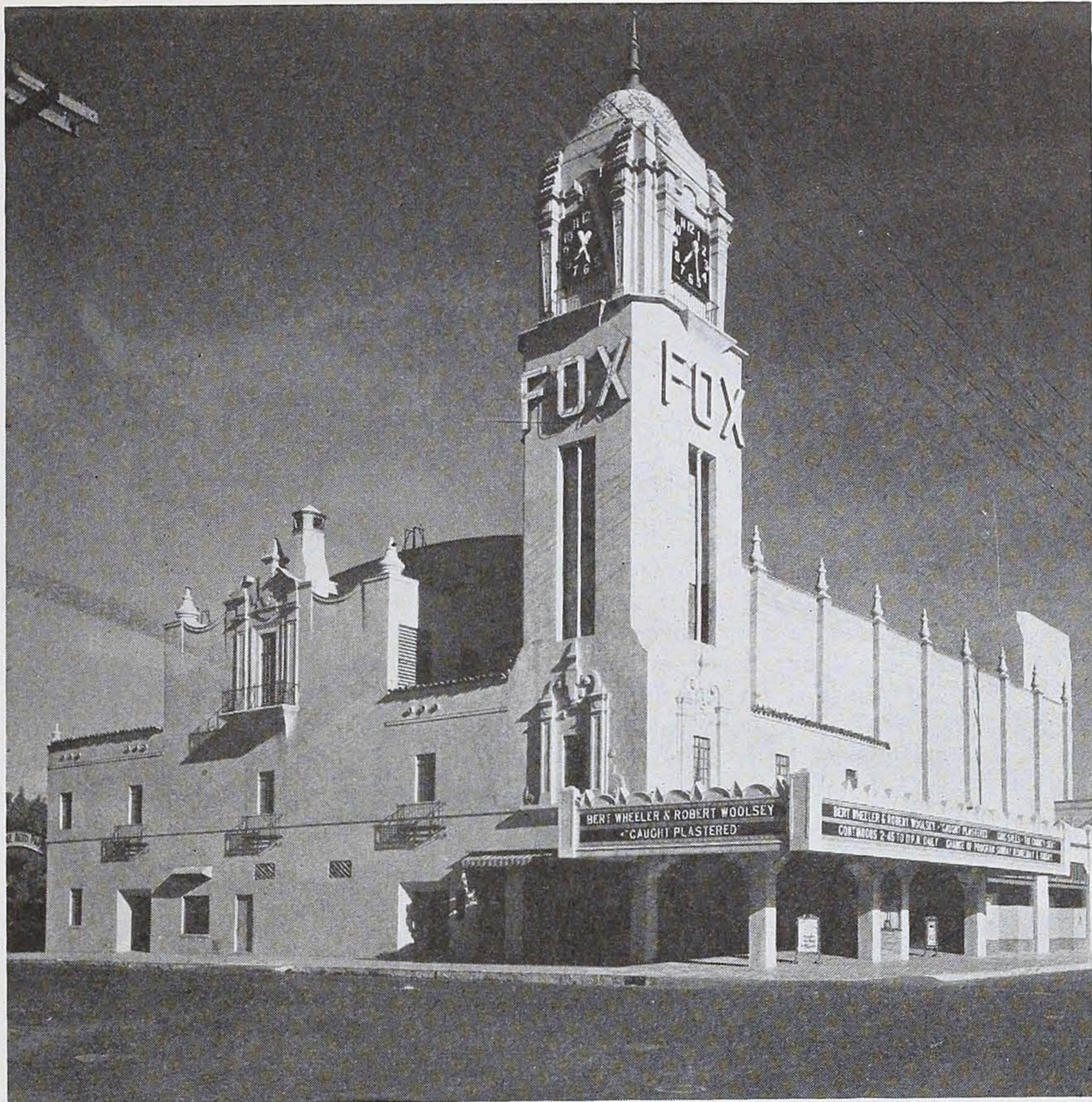
Richly carpeted stairs lead from the foyer to the balcony, the structure of which balcony has afforded an interesting ceiling treatment to the foyer, the ceiling being inclined following the balcony structure, with massive beams enhancing the

Spanish effect. From the foyer stairs the patron may look through an opening and view the ventilating equipment—an effort to exploit the air conditioning facilities.

The auditorium is essentially atmospheric in design and decoration. The hot glare of the desert sun without is smoothed to the soft light of a summer moon by means of indirect lighting enhanced by star effects in the theatre ceiling. The walls terminate, skyward, with domestic Spanish skylines done in plaster to resemble textured walls, tiled roofs, grilled windows and balconies, and other characteristic and romantic features of the Spanish horizon.

Acoustic plaster, which in this case lent itself well to the decorative scheme, has been used in this auditorium. The screen is of "grandeur" proportions, necessitating a large and imposing proscenium arch.

Full stage equipment has been provided to accommodate stage productions. A commodious suite of stage dressing rooms are located above the store buildings.



Upper view: General view of the exterior, a harmonious composition of masses dominated by a quadrangular tower. The building is of reinforced concrete and steel with stucco finish.

Left: Along the foyer running beneath a portion of the balcony, the structure of which led to a slanting of the foyer ceiling, with heavy beams bearing stenciled designs painted in vivid colors.