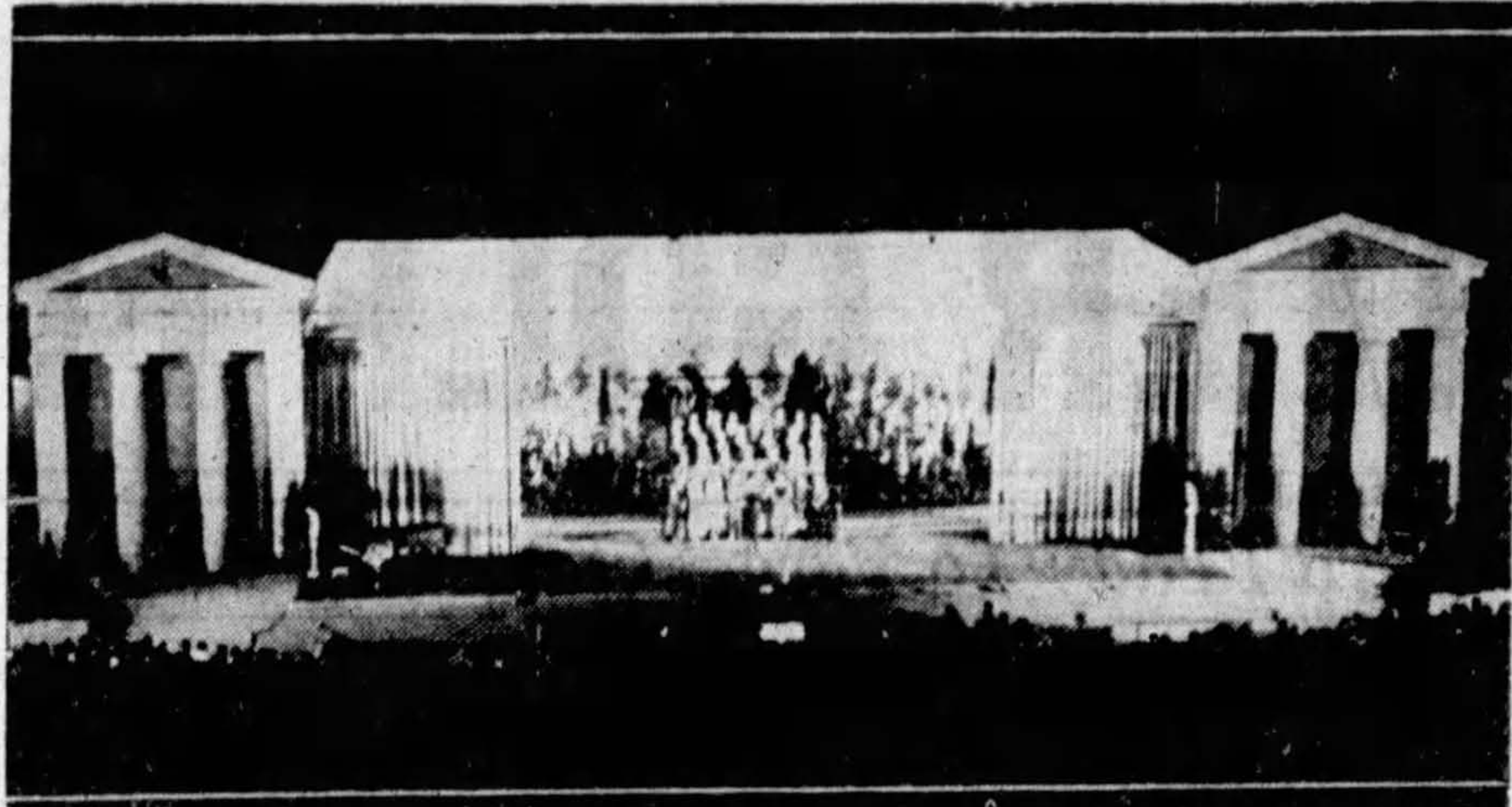


DREAM IS REALIZED AS THEATER DEDICATED



John Smallman's a capella choir as it appeared last night on the stage of the new Griffith Park Greek Theater as one of the features of the dedication program. The amphitheater, seating more than 4000, was filled to capacity for the event. The theater was made possible by funds left for the purpose by the late Col. Griffith J. Griffith, who donated the park bearing his name to the city.

Citizen Photo

New Greek Amphitheater in Griffith Park Formally Presented To City

By MARJORIE ROSS

A dream come true. An ambition fulfilled. The fruition of Colonel Griffith J. Griffith's plan to give to the city of Los Angeles a Greek Theater in Griffith Park was realized last night in the dedication of the beautiful temple of entertainment in Vermont Canyon. Just a little more than ten years after his death, the theater was completed and dedicated to the people of the city for their perpetual use and joy.

The program was arranged to demonstrate the possibilities of the theater and included music, drama and dancing interpreted by artists famous in the realm of entertainment. The spacious stage with a background of verdure, skillfully arranged against a sea of blue is sufficiently large to accommodate an opera company. However one artist or a small ensemble would find intimate surroundings for the expression of their talents.

Beautifully Situated

Nestled into the hills with their covering of trees and shrubbery, the theater is beautifully situated and its pure Grecian lines stand out in sharp relief against the natural background which has not been disturbed. More than 4000 persons can be seated and last night the capacity of the new recreation center was taxed to the limit.

As one approaches the theatre, enters its portals to the seating arena, and awaits the first note of music, the outpouring of song or the tragedy of drama, one is impressed with the sublime beauty of the place and there is an atmosphere of fulfillment and contentment that was visualized by Colonel Griffith when he planned this fitting monument to his faith and devotion to his city.

Ellen Yaw Sings

The program was presented by the Security-First National Bank of Los Angeles under the personal direction of L. E. Behymer. Paul Eisler, Metropole Opera Conductor, led an orchestra of 60 musicians and Ellen Beach Yaw opened the entertainment singing "Star Spangled Banner," with a large chorus and the audience joining in the patriotic refrain.

Mr. Behymer, as master of ceremonies, announced each number and in a preliminary speech, told of Colonel Griffith's provision in his will for the erection of the the-

(Continued on Page Nine)

GREEK THEATER HERE DEDICATED

(Continued from Page Two)

ater. John C. Austin, president of the Los Angeles Chamber of Commerce, expressed the pride and appreciation of the city for the gift and introduced Mayor John C. Porter, W. J. Sanborn, president of the city council, members of the board of park commissioners, and Van M. Griffith, son of the late Colonel Griffith.

Presented by Roseberry

Senator Louis H. Roseberry, vice president of the Security-First National Bank and representing the institution which served as trustee under the will of Colonel Griffith, presented the theater to the city. It was accepted by Mayor Porter who transferred its custody to the board of park commissioners, of which Mrs. Mable V. Socha is president.

Soloists who contributed to the pleasure of the event were Miss Alice Gentle, Miss Georgia Stark and Don Jose Mojica. John Smallman's a cappella choir sang three numbers and an American Indian Episode was given with Chief Standing Bear and his dancers interpreting traditional dances. Chief Yowlache and Louschaenya, mezzo soprano, contributed solos throughout the number.

Francis Josef Hickson and his company of Greek players presented the final episode of "Oepidus Rex." Norma Gould and her Greek dancers offered a symbolic dance and the program was concluded with the song "Just California," composed especially for the occasion by Homer Grunn.