

THEATRE EQUIPMENT

Spanish Architecture Faithfully Reproduced in Orpheum Theatre

Newest Wichita, Kas., Playhouse Embraces Many Distinctive Features of Design and Furnishing

The Orpheum, newest of Wichita, Kansas, theatres, which, in connection with the large office building of which it is a part was erected at a cost of \$800,000, is a strikingly fine example of Spanish architecture. Colorful and picturesque Spanish design prevails throughout, distinctive and breathing of realism, yet striking a happy medium that makes it neither obtrusive nor overdone. It has been declared among the most beautiful and cleverly artistic playhouses of its kind.

The result is the achievement of Architect John Eberson, Chicago, after exhaustive research and the aid of famous artists of Spain and Italy. The Orpheum is leased by Central States Amusement Company, and was officially opened on September 4.

The building is situated at the corner of First and Lawrence. Six pairs of large doors, protected by an ornamental metal marquise, greet the observer at the entrance.

The ceiling of the lobby is carried in elaborate Spanish faience in vivid colors of burnt orange, green, blue, old rose and gray. It is illuminated with clusters of electric lights in polychrome colors and unique design. The wall of the room is mottled gray. The radiators are concealed in recesses hidden behind rusty iron grills, over which are small niches where are to be found the posters of attractions. There are polychrome light brackets on either side of these niches with a fixture of Spanish design suspended from the center of each niche.

Lobby Floor in Designs

The floor of the lobby is tile of elaborate design in exceptional colors. On the north side of the lobby are the box offices with castiron grills in polychrome colors and art glass windows. On each side of the pilasters are ornamental light fixtures with colored lights.

Five pairs of doors to the east give entrance into the vesti-

bule, the walls of which are ornamental with full length mirrors in ornamental frames, treated in orange and green. On the north side of the vestibule art marble stairs lead to the mezzanine floor and on the east, three pairs of metal doors lead to the foyer.

The floor of the foyer is carpeted in old rose which harmonizes perfectly with the decorations of the walls and ceiling. On the south wall between the four exit doors are rich seats upholstered in old rose, which conceal the radiators and over which are mirrors with ornamental plaster frames. On the mezzanine floor are to be a ladies' retiring room, nursery, men's smoking room, the offices of the management of the theatre and a large niche which adds materially to the beauty of the room.

Walls Match Furniture

The walls of the men's smoking room are of Tiffany decoration in stippled leather design to match the leather upholstery of the furniture, the wood portions of which are in dusty walnut. In this room, as in the other rooms on this floor, is a heavy ornamental plaster cornice, done in burnt orange, old ivory and black. The tiled floor of the smoking room is old ivory and deep red with black

borders. The room is mechanically ventilated.

The walls of the ladies' retiring room are carried in stippled old ivory and deep yellow, matching the furniture which is upholstered in similar colors, stripped in yellow and black. Opening off the room are marble toilets and lavatories.

Nursery a Feature

In the nursery adjoining the ladies' retiring room are cribs for the smaller children with toys and amusement devices for the older ones. When a child is left with the maid in this room, the mother is given a check for it and in turn the maid notes the number of the mother's seat so she may be called without unnecessary disturbance, in the event that her presence in the nursery is necessary.

To the north of the mezzanine is the niche, with recesses in which are electrical floor lamps. The niche is fitted up with artistic lounging furniture in dusty walnut, upholstered in old rose, black and gold. The ceiling of the mezzanine is paneled in blue, burnt orange and yellow.

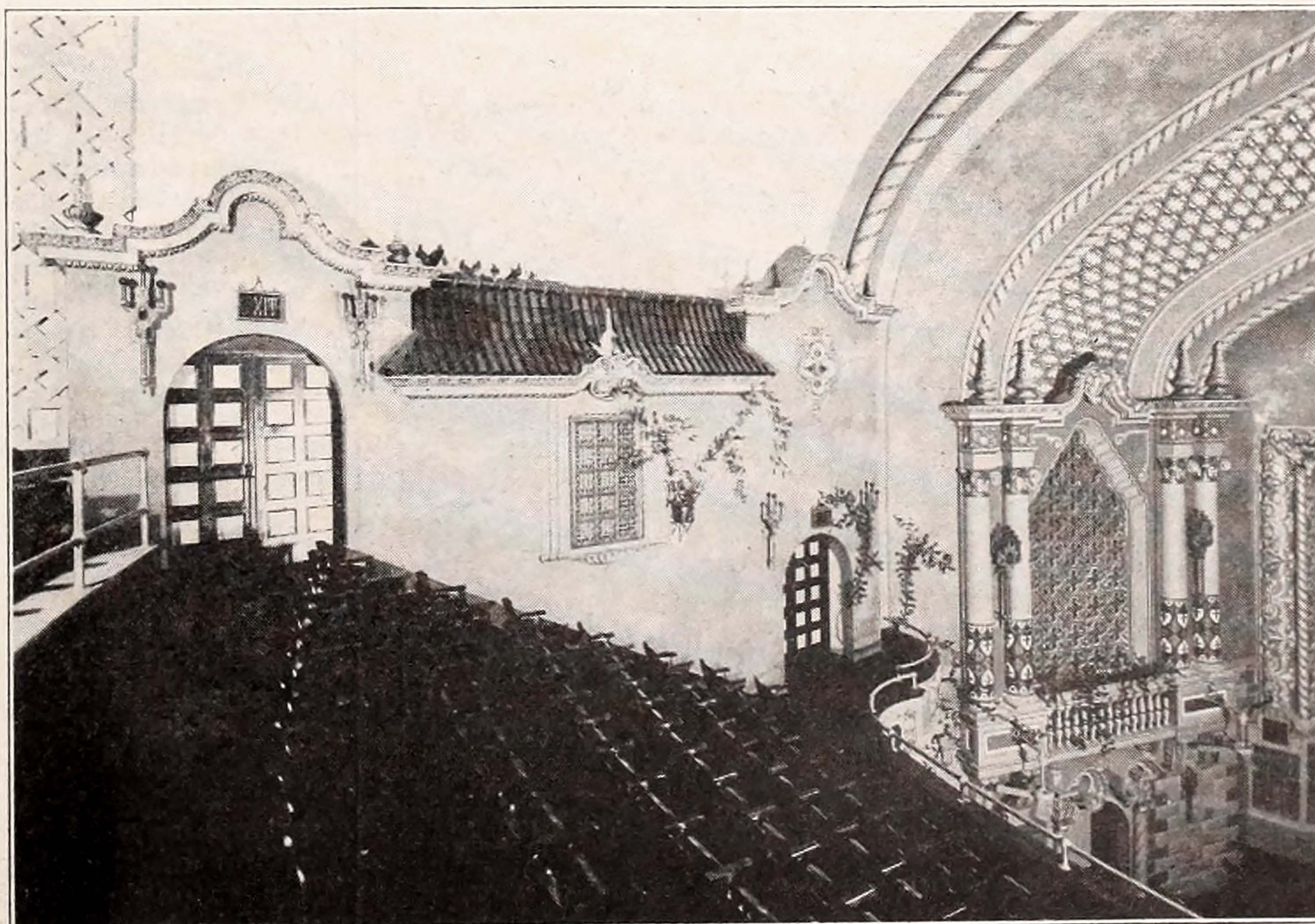
At either end of the mezzanine floor art marble stairs lead to the rear of the balcony and on either side of the niche marble stairs lead to the mezzanine floor of the balcony. The doors and transoms

of the mezzanine floor are profusely treated in art glass in deep red, yellow and old ivory with coats of arms. High backed old rose upholstered chairs surmounted by lighting fixtures render less severe the four columns at the north of the mezzanine.

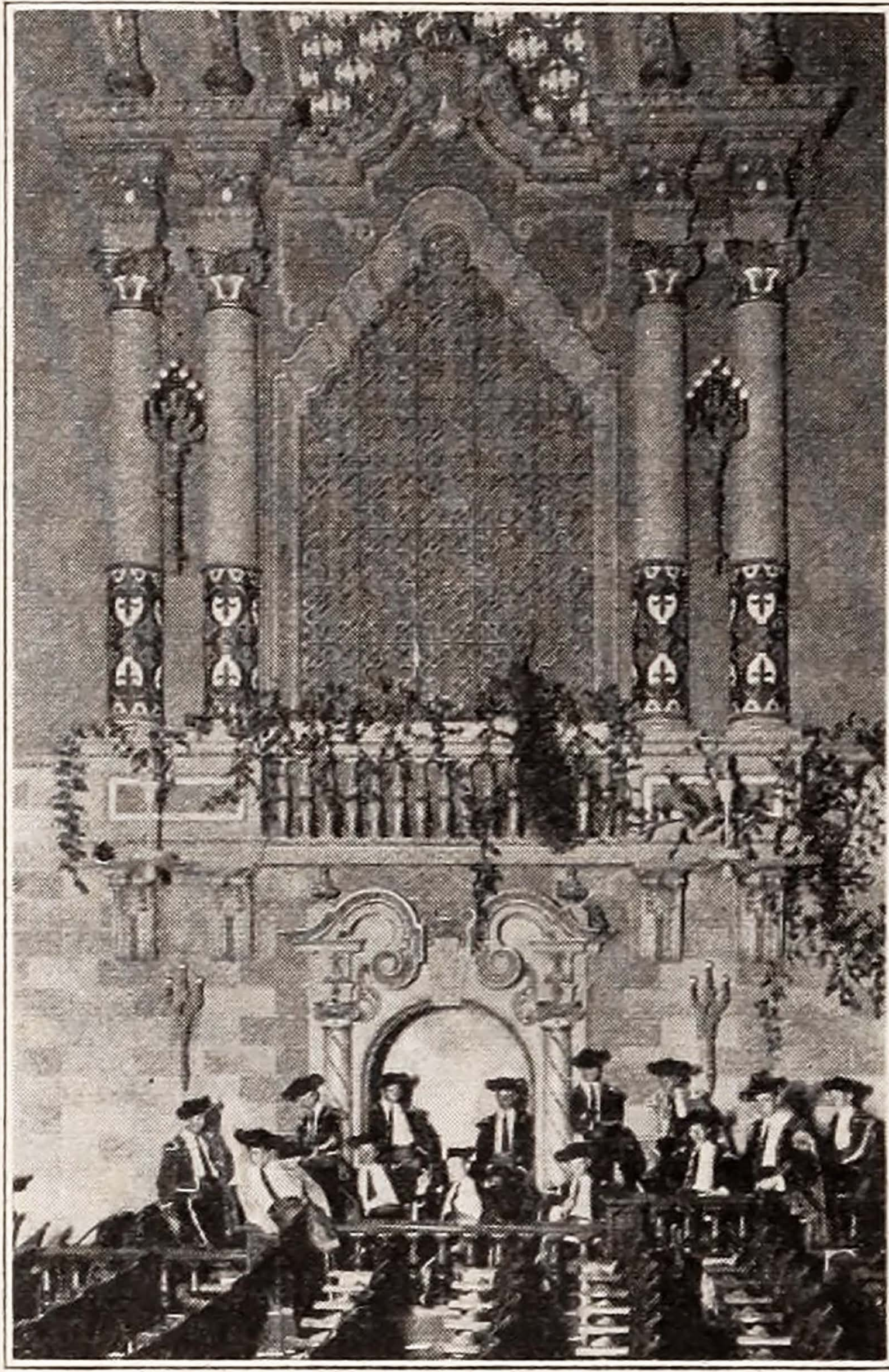
The foyer is separated from the main auditorium by a balustrade treated in dusty walnut, blue, green and old rose.

Villa Effect Is Unique

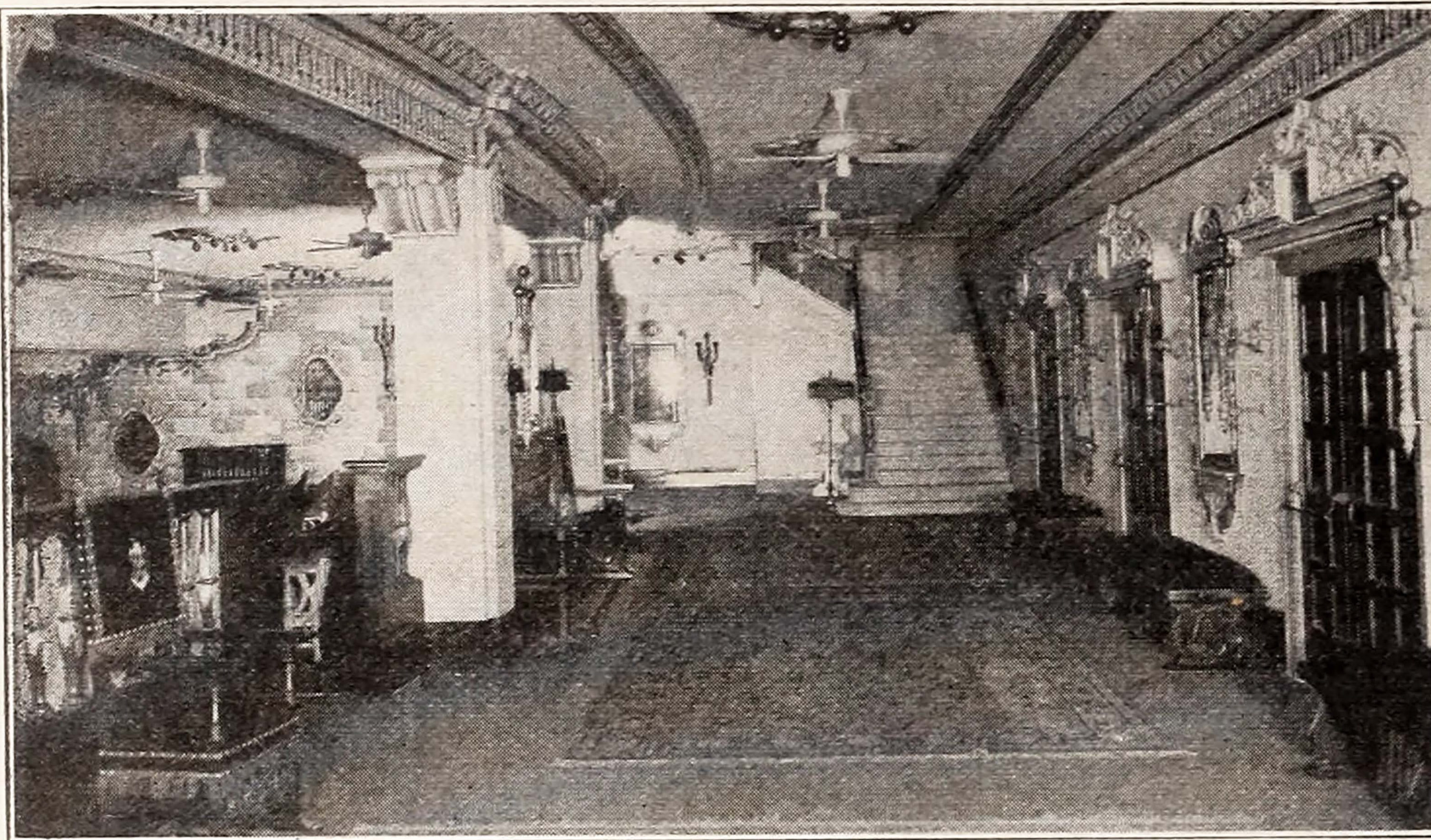
On each side of the balcony is a Spanish house, with two pairs of doors. Apparently they are entrances to the houses, but in reality they are emergency exits from the



View showing sky and Spanish housetops. Note tile roof.

O
R
P
H
E
U
M

Artistic organ screen and ushers.

T
H
E
A
T
R
E

The grand foyer, with its beautiful furnishings.



Box Office and tile lobby floor in elaborate design.

balcony. A grilled window in the wall of each house, with amber light reflected back of it almost leads one to believe that he is looking into the house, but the purpose of the grill is to deliver pure, cooled air into each house, carrying out the effect of a villa in Spain.

The face of the balcony is artistically done in ornamental plaster, with shields in burnt orange, old ivory, blue and green.

Entering the main auditorium, one is impressed with the exceptional view of the stage from the rear of the room. Due to a pitch of three feet in the floor, the seats in the rear are as desirable as those in the front of the room. The same is true of the balcony.

Represents Garden Wall

The side walls of the main auditorium are treated to represent a garden wall of old stone, through which arches appear to lead outside. These are only emergency exits. Four elaborate grilled windows supply pure washed air to the room. The garden wall effect is carried to within a few feet of the ceiling, when it is finished with a cornice, with vines, birds and flowers, and recesses above.

Reflected over the garden wall, in the rear of the arched openings and back of the grilled windows are deep blue lights, creating the impression that one is looking out into the open night. The same effect is carried back of the roof of the Spanish houses in the balcony, and entirely across the arched ceilings of the main auditorium through which are seen twinkling stars, giving the effect of the vaulted skies. Farther back in the ceiling of the balcony, through latticed openings, deeper blue lights are reflected. Through these latticed openings the impure air of the theatre is exhausted by means of two powerful exhaust fans situated on the roof of the building.

From each point where the blue lights are reflected there are also X-ray reflectors which throw rays of red and amber light, as well as the blue, in any volume required, either in single colors or in blends, at the pleasure of the operator.

On the balustrade at the base of the organ grill is a box containing flowers and vines, back of which is a peacock in brilliant colors.

The stage of the theatre will accommodate largest traveling shows. The proscenium arch is 38 feet high by 42 feet wide.

The lighting effect obtained by the operation of the Major pre-selective system of theatre lighting supplies all needful illumination.

The entire theatre is provided with pure washed air which is taken from the top of the building, treated by the most modern purifying and cooling processes and forced through circulation tunnels under the floor and through openings in the walls of the room.

Seats Are in Red

The 1,800 seats in the auditorium installed by American Seating Company, are large and comfortable, and are upholstered in red leather trimmed in green.

One of the striking features of the interior is the asbestos curtain designed by Architect Ebersson especially for the theatre and painted by Fabric Studios, Chicago. This curtain, which weighs 1,000 pounds, is painted with scenes which harmonize admirably with the interior decoration of the theatre. In connection with this curtain is a full complement of curtains, drops, olios of beautiful designs, rich material and excellent workmanship.